

# WELCOME TO LYON COUNTY

## RELOCATION GUIDE 2024

COMPLIMENTS OF FIRST CENTENNIAL TITLE





# LYON COUNTY RELOCATION GUIDE

# CONTENTS

1-15

## GENERAL INFORMATION

- Home Means Nevada
- Why Nevada?
- Nevada Tax Advantages
- Welcome to Lyon County
- City Profiles
  - Dayton
  - Fernley
  - Yerington
  - Smith Valley
  - Silver Springs
  - Silver City
- Education
- Demographics



16-22

## LOCAL SERVICES

- Local Services
- Medical Facilities
- Childcare & Youth Services
- Senior Sources
- Pet & Animal Services
- Churches & Faith Centers
- Health Clubs
- Transportation



23-30

## THINGS TO DO

- Things to Do
- Golf Courses
- Winter Recreation
- Tahoe Area Resorts
- Parks & Recreation
- Nevada State Parks







# GENERAL INFORMATION



# HOME MEANS NEVADA

**Entered the Union:** October 31, 1864 (36th)

**Capital:** Carson City

**Origin of Name:** Spanish for "snow-covered"

**State Motto:** All for Our Country

**State Nicknames:** Sagebrush State \* Silver State \* Battle Born State

**State Song:** "Home Means Nevada"

**National Forests:** 2 **State Parks:** 23

**Famous for:** Gambling, Lake Tahoe, Reno, Las Vegas, Gold & Silver Mining, Wild Mustangs and Outdoor Recreation

## STATE SYMBOLS

**Bird:** Mountain Bluebird

**Tree:** Bristlecone Pine

**Flower:** Sagebrush

**Colors:** Silver & Blue

**Animal:** Desert Bighorn Sheep

**Fish:** Lahontan Cutthroat Trout

**Grass:** Indian Ricegrass

**Fossil:** Ichthyosaur

**Rock:** Sandstone

**Metal:** Silver

## FUN FACTS

- Nevada was made famous by the 1859 discovery of the Comstock Lode, the richest known U.S. silver deposit.
- Nevada is the largest gold-producing state in the nation. It is second in the world behind South Africa.
- Nevada is the gambling and entertainment capital of the United States.
- Las Vegas has more hotel rooms than any other place on earth.
- Most of the state is desert but the Sierra Nevada mountain range near Reno and the Ruby Mountains near Elko have snow for half the year.
- Nevada has more mountain ranges than any other state, with its highest point at the 13,145 foot top of Boundary Peak near the west central border.
- About 150 couples get married in Las Vegas each day.
- In 1899 Charles Fey invented a slot machine named the Liberty Bell. In 1999 Nevada had 205,726 slot machines, one for every 10 residents.

Nevada State Flag





# WHY NEVADA?

Current Lyon County Population: 61,585

\*As of July 1, 2022

## Region's Largest Non-Gaming Employers:

1. Renown Health
2. St Mary's Regional Medical Center
3. University Nevada, Reno
4. AMERCO
5. Legacy Supply Chain

## Reno Business and Gaming

When people think of Reno, they think of gambling. However, over the last couple of decades, Reno and Sparks have become much more than just gaming cities. With many prominent corporations residing in the area, INC magazine rated Reno as the sixth best spot to do business for a mid-sized city.

## Advantages of Doing Business in Nevada

- Stockholders, directors and officers do not need to live or hold meetings in Nevada.
- Directors do not need to be stockholders.
- Officers and directors of a Nevada Corporation can be protected from personal liability for lawful acts of the corporation.
- Nevada corporation may purchase, hold, sell or transfer shares of its own stock.

## US Best States for Doing Business

State of Nevada ranked #6 from the Chief Executive's annual survey that asked over 600 CEO's to grade each state on the following criteria:

- *Taxation & Regulation*
- *Workforce & Quality*
- *Living Environment*

*Courtesy of EDAWN & Northern Nevada Business*

## Reno-Sparks Key Industries:

1. Advanced Manufacturing
2. Distribution, Logistics & E-Commerce
3. Back Office, Business Support & Data Centers
4. Clean Energy
5. Financial Services
6. Aerospace & Defense



## SALES TAX RATE

|                  |      |
|------------------|------|
| Carson County    | 7.60 |
| Churchill County | 7.60 |
| Clark County     | 8.38 |
| Douglas County   | 7.10 |
| Lyon County      | 7.10 |
| Storey County    | 7.60 |
| Washoe County    | 8.27 |





# NEVADA TAX ADVANTAGES

HOW DOES NO STATE INCOME TAX SOUND? TO MANY IT HAS SOUNDED LIKE A GREAT REASON TO MAKE NEVADA HOME.

**The requirements are simple, and the benefits can be quite impressive.**

The main qualifier for this tax "hospitality" is to make Nevada your central place of residence. This does not mean you cannot do business or even have residences in other states, just that Nevada is the state in which you have the closest ties.

If you are residing in Nevada and become a Nevada resident, you will generally escape state income taxes, except for income that arises from sources within another state.

Even if you are required to "source" part of your income from a state that has an income tax, you may still enjoy a significant decrease in your overall tax burden.

**Below are a few reasons why you should consider Nevada for your home and business:**

- No personal income tax
- No corporate income tax
- No gross receipts tax
- No franchise tax
- No inventory tax
- No tax on issuance of corporate shares
- No requirements of shareholders and directors to live in Nevada
- No tax on sale or transfer of shares
- No succession or inheritance with IRS
- Simple annual requirements
- Protection for Directors and Officers
- No initial or minimum capital requirements
- Anonymity of owners-total privacy
- Low property taxes
- Business friendly environment
- Dynasty Trust Laws allow for wealth to be passed from generation to generation on a tax-advantaged environment





# WELCOME TO LYON COUNTY

Lyon County was one of the original Nevada counties created in 1861. It was named after General Nathaniel Lyon who died in the Civil War. Located in northwestern Nevada, Lyon County includes two incorporated cities; the city of Fernley and the City of Yerington. Lyon County is adjacent to Storey and Washoe counties on the north, Mineral and Mono (California) counties on the south, Churchill and Mineral counties on the east, and Douglas County and Carson City on the west. Three rivers flow through the county; the Carson River, the Truckee River and the Walker River.

Throughout most of the Lyon County's past, growth has been gradual and slow and the County has remained predominantly rural in character. In recent years development within Lyon County increased in response to the development and expansion of the northern Nevada region with some areas of the County becoming suburbanized. The economies of Lyon County is primarily ranching and mining.

A majority of the County's development lies within eight communities: Dayton, Fernley, Mason Valley, Mound House, Silver City, Silver Springs, Smith Valley and Stagecoach. For three years during the past 10 years, the County was one of the 10 fastest growing counties in the United States (on a percentage basis).

The incentives for doing business in Nevada are expansive. Nevada boasts one of the most liberal tax structures in the nation and from a tax-planning perspective, the return on investment in the form of tax saving dollars can be enormous.







# DAYTON

Old Town Dayton remains quaint, reminiscent of its origins as a Nevada mining town, but the growth of the surrounding area puts a new spin on Dayton's history in the new millennium. In January 1999, a supermarket opened in Dayton Valley and has now become the nucleus of a shopping complex. Dayton Valley now boasts two medical complexes, two veterinary clinics, numerous eateries, several casinos, gas stations, mechanics, and other services, and many other modern amenities. It also will soon have its own hospital. New subdivisions, four schools, a public library, a senior center, museums, churches, fire departments, an airstrip, industrial, and business areas reflect rapid change.

## DISTANCES TO OTHER CITIES

| CITY           | MILES |
|----------------|-------|
| CARSON CITY    | 12.6  |
| RENO           | 41.6  |
| VIRGINIA CITY  | 10.7  |
| LAKE TAHOE     | 32.3  |
| FERNLEY        | 38.2  |
| YERINGTON      | 52.3  |
| SMITH VALLEY   | 61.3  |
| SILVER SPRINGS | 24.1  |
| SILVER CITY    | 7     |
| FALLON         | 78.9  |

**CURRENT POPULATION DAYTON, NV: 15,036**

## DAYTON CLIMATE

| TEMP      | HIGH | LOW |
|-----------|------|-----|
| JANUARY   | 47'  | 31' |
| MARCH     | 55'  | 37' |
| MAY       | 70'  | 49' |
| JULY      | 90'  | 66' |
| SEPTEMBER | 80'  | 57' |
| NOVEMBER  | 55'  | 37' |



# FERNLEY

Fernley is strategically located as a north-south, east-west transportation hub. Several Fortune 500 companies have discovered Fernley's affordable industrial parks, large land parcels with rail and highway access. Over 85% of the State of Nevada is public lands and Fernley is surrounded by public outdoor recreation opportunities. Pyramid Lake is 15 miles to the north, Lake Lahontan is 12 miles to the south, the Fernley Wildlife Management area joins Fernley on the east and the Truckee River to the west. Lake Tahoe is also just a short drive away. Fernley's central location makes recreational activities such as boating, water skiing, camping, fishing and swimming easily accessible. The outdoor enthusiast has numerous activities that take advantage of the over 300 days a year of clear skies and wonderful temperatures. Fernley lies in the midst of millions of acres of public lands that are a thrill for anyone who loves the outdoors.

**CURRENT POPULATION FERNLEY, NV: 23,898**

## FERNLEY CLIMATE

| TEMP      | HIGH | LOW |
|-----------|------|-----|
| JANUARY   | 46'  | 19' |
| MARCH     | 59'  | 28' |
| MAY       | 74'  | 41' |
| JULY      | 93'  | 54' |
| SEPTEMBER | 82'  | 43' |
| NOVEMBER  | 56'  | 24' |

## DISTANCES TO OTHER CITIES

| CITY           | MILES |
|----------------|-------|
| CARSON CITY    | 49.6  |
| RENO           | 34.4  |
| VIRGINIA CITY  | 40.2  |
| LAKE TAHOE     | 68.4  |
| DAYTON         | 38.2  |
| YERINGTON      | 46.4  |
| SMITH VALLEY   | 66    |
| SILVER SPRINGS | 14.2  |
| SILVER CITY    | 44.9  |
| FALLON         | 27.6  |



# YERINGTON

Yerington is located in a region rich in history and western lore. John C. Fremont made the first recorded account of this region in 1844. He was on his second expedition to explore and map the West and followed the course of the Walker River into a large fertile valley. This valley was later named after it's first settlement, N.H.A. "Hock" Mason, who established the area's first homestead and the name Mason Valley. Today, Yerington, incorporated in 1907 and the county seat, enjoys the diversity of both industrial and agricultural lifestyles . One can enjoy the simple pleasures of a rural lifestyle and yet experience Nevada's unbeatable business climate. Yerington offers many amenities such as a municipal airport, prime business and industrial sites, and complete infrastructure improvements. With a strong and diverse local economy and yet within close proximity to all the amenities of an urban center ( Reno & Carson City), Yerington offers the best of both worlds—a friendly, safe hometown with all of the business opportunities.

## DISTANCES TO OTHER CITIES

| CITY           | MILES |
|----------------|-------|
| CARSON CITY    | 64.6  |
| RENO           | 71.4  |
| VIRGINIA CITY  | 54.3  |
| LAKE TAHOE     | 84.3  |
| DAYTON         | 52.3  |
| FERNLEY        | 46.4  |
| SMITH VALLEY   | 21.7  |
| SILVER SPRINGS | 32.3  |
| SILVER CITY    | 59    |
| FALLON         | 89.6  |

CURRENT POPULATION YERINGTON, NV: 3,238

## YERINGTON CLIMATE

| TEMP      | HIGH | LOW |
|-----------|------|-----|
| JANUARY   | 46'  | 21' |
| MARCH     | 61'  | 30' |
| MAY       | 76'  | 43' |
| JULY      | 93'  | 56' |
| SEPTEMBER | 84'  | 47' |
| NOVEMBER  | 56'  | 26' |



A large, rustic wooden wagon with multiple wheels is parked in a field of dry, yellowish grass. The wagon is made of dark wood and has a simple, functional design. In the background, there are some dry bushes and trees, suggesting a rural or agricultural setting.

# SMITH VALLEY

Smith Valley is located on SR 208 approximately 20 miles southwest of Mason Valley. It is a rural farm and ranch community located near the foothills of the Sierra Nevada Mountains where one can observe wildlife and enjoy abundant outdoor activities such as camping, fishing and hiking. Alfalfa is the largest crop, however, potatoes, onions, garlic and grain crops are produced along with a number of cattle and cattle feed lot operations. The two rural agricultural communities of Smith and Wellington are situated in this beautiful valley that is only 15 miles from the California border.

**CURRENT POPULATION SMITH VALLEY, NV: 1,454**

## SMITH VALLEY CLIMATE

| TEMP      | HIGH | LOW |
|-----------|------|-----|
| JANUARY   | 45'  | 18' |
| MARCH     | 58'  | 27' |
| MAY       | 73'  | 38' |
| JULY      | 92'  | 52' |
| SEPTEMBER | 82'  | 42' |
| NOVEMBER  | 55'  | 23' |

## DISTANCES TO OTHER CITIES

| CITY           | MILES |
|----------------|-------|
| CARSON CITY    | 49.7  |
| RENO           | 83.5  |
| VIRGINIA CITY  | 73.9  |
| LAKE TAHOE     | 54    |
| DAYTON         | 61.6  |
| FERNLEY        | 66    |
| YERINGTON      | 21.7  |
| SILVER SPRINGS | 51.8  |
| SILVER CITY    | 61.2  |
| FALLON         | 106.6 |



# SILVER SPRINGS

Silver Springs is located at the intersection of US-50 and US-95A and is 42 miles east of Reno. It is a rural area with only 2 small markets to shop from and 2 gas stations, all major shopping can be done in the neighboring larger cities that are only 20-40 minutes away. Silver Springs is known for Lahontan Reservoir, Lahontan State Recreation area and historic Fort Churchill State Park. Compared to the rest of the country, Silver Spring's cost of living is 3.6% lower than the U.S. average.

## DISTANCES TO OTHER CITIES

| CITY          | MILES |
|---------------|-------|
| CARSON CITY   | 35.7  |
| RENO          | 41.6  |
| VIRGINIA CITY | 26.2  |
| LAKE TAHOE    | 60.7  |
| DAYTON        | 24.3  |
| FERNLEY       | 14.4  |
| SMITH VALLEY  | 32.9  |
| YERINGTON     | 32.2  |
| SILVER CITY   | 31    |
| FALLON        | 26.7  |

CURRENT POPULATION SILVER SPRINGS, NV: 4,684

## SILVER SPRINGS CLIMATE

| TEMP      | HIGH | LOW |
|-----------|------|-----|
| JANUARY   | 46'  | 24' |
| MARCH     | 60'  | 34' |
| MAY       | 76'  | 48' |
| JULY      | 95'  | 64' |
| SEPTEMBER | 84'  | 53' |
| NOVEMBER  | 56'  | 31' |





# SILVER CITY

Silver City is located about 3 miles northwest of Dayton. Silver City was established after the Comstock was discovered in 1859. By 1861 the population had increased to 1,200 people with four saloons, hotels, and other facilities for horses and wagons. Silver City was also the main stay for animals that were being used for hauling between the Comstock and Carson City. Silver City was also the first to establish the Silver Mill around 1862. During the 1860's more mills were erected and by 1871 Silver City had 8 mills with 95 stamps. In 1869 the town went into decline as the construction of Virginia and Truckee Railroad ruined Silver City's livestock and business. Silver City is now known as a ghost town and residential community in Lyon County near the Lyon and Carson border.

## CURRENT POPULATION SILVER CITY, NV: 155

## SILVER CITY CLIMATE

| TEMP      | HIGH | LOW |
|-----------|------|-----|
| JANUARY   | 45'  | 29' |
| MARCH     | 55'  | 35' |
| MAY       | 68'  | 47' |
| JULY      | 88'  | 64' |
| SEPTEMBER | 78'  | 55' |
| NOVEMBER  | 53'  | 35' |

## DISTANCES TO OTHER CITIES

| CITY           | MILES |
|----------------|-------|
| CARSON CITY    | 12.3  |
| RENO           | 41.4  |
| VIRGINIA CITY  | 3.7   |
| LAKE TAHOE     | 32    |
| DAYTON         | 7.1   |
| FERNLEY        | 44.9  |
| YERINGTON      | 59    |
| SILVER SPRINGS | 30.8  |
| SMITH VALLEY   | 61    |
| FALLON         | 57.3  |





# EDUCATION

The Lyon County School District central office is located at 25 East Goldfield Avenue in Yerington. The District office is open 8:00am-5:00pm Monday through Friday, including during the summer months when school is not in session. The current Superintendent of Schools is Mr. Wayne Workman, who has held the position since 2015.

The District is the largest employer in Lyon County, employing 582 licensed staff, 326 classified staff, and just over 400 substitute staff across 18 schools, 4 school bus yards and the District office.

Lyon County School District-775.463.6800/www.lyon.k12.nv.us

| DAYTON AREA                           | PHONE        |
|---------------------------------------|--------------|
| Sutro Elementary School               | 775.246.6270 |
| Dayton Elementary School              | 775.246.6262 |
| Riverview Elementary School           | 775.246.6170 |
| Dayton Intermediate Elementary School | 775.246.6250 |
| Dayton High School                    | 775.246.6240 |
| FERNLEY AREA                          |              |
| Fernley Elementary School             | 775.575.3420 |
| Cottonwood Elementary School          | 775.575.3414 |
| East Valley Elementary School         | 775.575.3332 |
| Silverland Middle School              | 775.575.1575 |
| Fernley Intermediate School           | 775.575.3390 |
| Fernley High School                   | 775.575.3400 |
| Fernley Adult Education               | 775.575.3409 |
| SILVER SPRINGS AREA                   |              |
| Silver Stage Elementary School        | 775.577.5050 |
| Silver Stage Middle School            | 775.577.5050 |
| Silver Stage High School              | 775.577.5071 |
| Silver Stage Adult Education          | 775.577.5071 |
| SMITH VALLEY AREA                     |              |
| Smith Valley Schools                  | 775.465.2332 |
| YERINGTON AREA                        |              |
| Yerington Elementary School           | 775.463.6844 |
| Yerington Intermediate School         | 775.463.6833 |
| Yerington High School                 | 775.463.6822 |
| Yerington Adult Education             | 775.463.3006 |







# UNIVERSITY OF NEVADA, RENO

**The University of Nevada, Reno** is the state's historic flagship institution of higher education. The University has a student enrollment of more than 19,000, including about 3,200 graduate students, and a total budget of nearly \$500 million.

The University provides a broad range of programs and degree options, ranging from baccalaureate degrees in more than 75 disciplines to more than 100 graduate-degree programs at the master's and doctoral level. The University of Nevada School of Medicine is a vital component of the University, with campuses in both of Nevada's major urban centers, Las Vegas and Reno, and a health network that extends to much of rural Nevada.

The University of Nevada was founded in 1874 in Elko as the state's first institution of higher education. Relocated to Reno in 1887, the University remained the state's only institution of higher education for 75 years. The first building on the Reno campus, Morrill Hall, is still in use today, and the campus has grown from a small cluster of buildings surrounding a central quadrangle (modeled after Thomas Jefferson's design for the University of Virginia), to a 250-acre site just north of downtown Reno. The University is one of eight institutions of higher education governed by the Nevada System of Higher Education.

The University has more than 145 undergraduate degree programs, and more than 150 graduate degree programs (57 master's, 80 doctoral and 24 professional graduate programs) from which students may choose. New majors approved recently include Atmospheric Sciences, Environmental Science, Forest and Rangeland Management, Wildlife Ecology, and Computer and Information Engineering. The University is also in the process of adding new Ph.D. programs in Mathematics, Statistics, and Geography, and a new interdisciplinary undergraduate program in Environmental Studies.

The tuition for Nevada resident undergraduates is among the lowest in the western United States and is a reflection of the Board of Regents' and state legislature's policy to provide access to as many Nevada high school graduates as are qualified. For example, the resident undergraduate tuition and fees total \$8,798 a year, which is lower than all but one of 15 western states. Non-resident undergraduate tuition and fees total \$25,340 a year, which is at the median for the western states.

Coupled with its status as a land-grant institution, the University necessarily has a statewide mission and boasts programs and activities in all 17 counties of the state. It has more than 700 employees outside the Reno area, most of them in Las Vegas. It plays a critical role in the promotion of health throughout the state through its Schools of Medicine, Nursing, and Public Health.

The University's athletics programs compete in NCAA Division I as part of the Mountain West Conference. The University fields competitive teams in 18 sports, with six men's sports and ten women's sports teams offering scholarships.



# UNIVERSITY OF NEVADA, RENO

A UNIVERSITY THAT IS MAKING THIS REGION A SMART CHOICE FOR BUSINESS

## Top Tier

of "Best National Universities" by U.S. News & World Report for the 14th year in a row.

## 140+ Years

That's how many years UNR has been the State's Land-Grant University. Today, we continue this proud tradition by serving citizens in every county of the Silver State

## \$850 Million

invested in advanced labs, residence halls and facilities to drive success since 2009.

## Top 25

in the nation for best part-time MBA program, as recognized by Bloomberg Businessweek.

## Research & Innovation

As a Carnegie® R1 institution, the University is classified among America's top 146 comprehensive, doctoral research universities.

## Shaking Up Engineering

Our earthquake engineering facility is the largest, most versatile in the United States.



## A SMART CHOICE FOR RESEARCH, DEVELOPMENT AND INNOVATION

With nearly \$1 billion invested in new labs and facilities, the University of Nevada, Reno is dedicated to paving the way for student success. Discover what makes the University a special place to be.



# LYON COUNTY DEMOGRAPHICS

| People   | Lyon County, NV | NEVADA     |
|--|-----------------|------------|
| <b>Families and Living Arrangements</b>  |                 |            |
| Households, 2018-2022  | 23,290          | 1,163,671  |
| Persons per household, 2018-2022   | 2.54            | 2.64       |
| Living in same house 1 year ago, percentage of persons age 1 year+, 2018-2022          | 87.9%           | 84.5%      |
| Language other than English spoken at home, percent of persons age 5 years+, 2018-2022 | 13.6%           | 29.8%      |
| <b>Education</b>   |                 |            |
| High school graduate or higher, percent of persons age 25 years +, 2018-2022           | 87.9%           | 87.1%      |
| Bachelor's degree or higher, percent of persons age 25 years+, 2018-2022               | 13.6%           | 26.5%      |
| <b>Health</b>  |                 |            |
| With a disability, under age 65 years, 2018-2022                                       | 11.6%           | 8.8%       |
| Persons without health insurance, under age 65 years, percent                          | 12.7%           | 13.2%      |
| <b>Economy</b>   |                 |            |
| In civilian labor force, total, percentage population age 16 years+                    | 58.5%           | 62.8%      |
| Total accommodation and food service sales, 2017 (\$1,000)                             | 56,325          | 33,979,949 |
| Total warehousing revenue, 2017 (\$1,000)  | 27,169          | 7,654,009  |
| Total retail sales, 2017 (\$1,000)   | 555,063         | 45,110,663 |
| Total retail sales per capita, 2017  | \$10,289        | \$15,178   |
| <b>Transportation</b>  |                 |            |
| Mean travel time to work (minutes), workers age 16 years+ 2016-2020                    | 29.8            | 24.7       |
| <b>Income and Poverty</b>  |                 |            |
| Median household income (in 2022 dollars), 2018-2022                                   | \$70,026        | \$71,646   |
| Per capita income in past 12 months (in 2022 dollars), 2018-2022                       | \$36,330        | \$37,945   |
| Persons in poverty, percent  | 11.0%           | 12.5%      |
| <b>Businesses</b>  |                 |            |
| Total employer establishments, 2021  | 836             | 73,505     |
| Total employment, 2021   | 8,866           | 1,157,850  |
| Total annual payroll, 2021 (\$1,000)   | 426,534         | 61,961,827 |
| Total nonemployment, percentage change establishments, 2020-2021                       | 2.6%            | -9.3%      |
| Total nonemployer establishments, 2020   | 2,874           | 258,560    |
| <b>Geography</b>   |                 |            |
| Population per square mile, 2020   | 29.6            | 28.3       |
| Land area in square miles, 2020  | 26.0            | 109,860.46 |
| FIPS Code  | 32019           | 32         |





# LYON COUNTY DEMOGRAPHICS

| People   | Lyon County, NV | NEVADA    |
|--|-----------------|-----------|
| <b>Population</b>  |                 |           |
| Population Estimates, July, 1 2023   | 60,903          | 3,177,772 |
| Population Estimates, April, 1 2020  | 59,235          | 3,104,624 |
| Population, percentage change - April 1, 2020 (estimates base) to July 1, 2023 | 2.8%            | 1.3%      |
| Population, Census, April 1, 2020  | 59,235          | 2,700,551 |
| <b>Age and Sex</b>   |                 |           |
| Persons under 5 years, percent   | 5.2%            | 5.5%      |
| Persons under 18 years, percent  | 20.9%           | 21.7%     |
| Persons 65 years and over, percent   | 21.4%           | 16.9%     |
| Female persons, percent  | 48.2%           | 49.5%     |
| <b>Race and Hispanic Origin</b>  |                 |           |
| White alone, percent   | 88.8%           | 72.1%     |
| Black or African American alone, percent                                       | 1.5%            | 10.8%     |
| American Indian and Alaskan Native alone, percent                              | 3.4%            | 1.7%      |
| Asian alone, percent   | 1.8%            | 9.4%      |
| Native Hawaiian and Other Pacific Islander alone, percent                      | 0.4%            | 0.9%      |
| Two or More Races, percent   | 4.0%            | 5.1%      |
| Hispanic or Latino, percent  | 19.6%           | 30.3%     |
| White alone, not Hispanic or Latino, percent                                   | 72.0%           | 45.7%     |
| <b>Population Characteristics</b>  |                 |           |
| Veterans, 2018-2022  | 6,062           | 203,118   |
| Foreign born persons, percent, 2018-2022                                       | 6.7%            | 19.1%     |
| <b>Housing</b>   |                 |           |
| Housing units, July 1, 2022  | 6.7%            | 1,328,725 |
| Owner-occupied housing unit rate - 2018-2022                                   | 73.0%           | 58.4%     |
| Median value to owner-occupied housing units - 2018-2022                       | \$238,600       | \$373,800 |
| Median selected monthly owner costs - with mortgage, 2018-2022                 | \$1,365         | \$1,791   |
| Median selected monthly owner costs - without mortgage, 2018-2022              | \$374           | \$491     |
| Median gross rent, 2018-2022   | \$1,062         | \$1,382   |
| Building permits, 2022   | 815             | 20,031    |





# LOCAL SERVICES







# LOCAL SERVICES

## UTILITIES ETC.

### **DMV**

Nevada Department of Motor Vehicles  
www.dmvnv.com  
775.684.4368

### **Electricity/Gas**

NV Energy  
775.834.4444

### **Garbage & Recycling**

Waste Management  
775.343.7596

### **Cable/Digital Television**

Spectrum Communications  
833.557.1755

### **Lyon County Water & Sewer**

775.577.2223

### **Southwest Gas Corporation**

877.860.6020

### **Silver Springs Water Co.**

775.577.2223

### **Telephone**

AT&T  
800.331.0500

### **Voter Registration**

775.887.2087

### **Fernley Utilities**

775.784.9930

### **Western Nevada Community College**

775.445.3000  
www.wnc.edu

### **United States Post Office**

800.275.8777

### **Highway Patrol**

775.687.9600

### **Libraries**

Fernley Branch Library  
775.575.3366

Smith Valley Library  
775.465.2369

Dayton Valley Branch Library  
775.246.6212

### **Fire Departments**

Central Lyon County Fire Protection District  
775.246.6209

Smith Valley Fire Department  
775.465.2577

Mason Valley Fire Protection  
775.463.2261

### **Police Departments**

Lyon County Sheriff's Department  
775.575.3350

Yerington Police Department  
775.463.2333

## MEDICAL FACILITIES

### **Carson-Tahoe Dayton Medical Center**

901 Medical Center Dr. Dayton, NV  
775.445.7210

### **Banner Health Center**

1260 Nevada Pacific Pkwy. Fernley, NV  
775.575.7171

### **South Lyon Medical Center**

213 S Whitacre St. Yerington, NV  
775.463.2348

### **Renown Medical Group - Silver Springs**

3595 US-50. Silver Springs, NV  
775.577.2117

### **Renown Medical Group - Fernley**

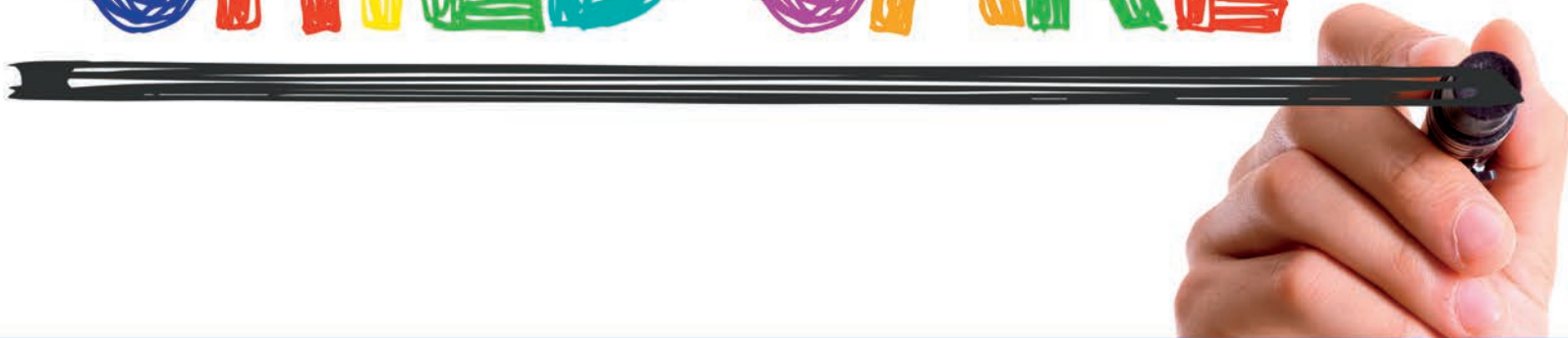
1343 W Newlands Dr. Fernley, NV  
775.982.5000

### **Fernley Mental Health Clinic**

395 US-95A. Fernley, NV  
775.575.7744



# CHILD CARE

**Cottonwood Headstart**

925 Farm District Rd. Fernley, NV  
775.575.9870

**Zoo n Around Learning Center**

380 Crimson Rd. Fernley, NV  
775.575.9666

**A Step Ahead Preschool**

945 N Clover Ln. Fernley, NV  
775.575.1122

**Boys & Girls Club of Mason Valley**

124 N Main St. Yerington, NV  
775.463.2334

**Dayton Valley Learning Center**

357 Dayton Valley Rd. Dayton, NV  
775.246.5111

**Cornerstone Christian Preschool**

4 Flowery Ave. Dayton, NV  
775.246.4100

**From Cradles to Crayons**

801 Overland Loop, #108 Dayton, NV  
775.241.2449

**Peas & Carrots Home Child Care**

280 Wagon Wheel Way Dayton, NV  
775.720.2989

## YOUTH SERVICES

**The Children's Cabinet**

775.856.6200

**Family Counseling Services**

775.329.0623

**Boys and Girls Club of Western Nevada**

775.882.8820

**Nevada Division of Child & Family Services**

775.684.4400

**Division of Welfare & Supportive Services**

775.684.7200

**Big Brothers Big Sisters of Northern Nevada**

775.352.3202





# SENIOR SOURCES

**American Association of Retired Persons (AARP)**

775.328.2506

**First Light Home Care**

775.437.1382

**Lend-a-Hand Senior Services**

775.322.8414

**Social Security & Medicare Eligibility Information**

800.633.4227

**Senior Companion Program**

775.358.2322

**Carson City Senior Center**

775.883.0703

**Aging & Disability Services Division**

775.688.2964

**Northern Nevada Center for Independent Living**

775.353.3599

**Health & Human Services Department**

775.684.4000

**Veterans Administration Benefits/Info**

800.827.1000

**VA Medical Center**

775.786.7200

**Retired Senior Volunteer Program**

775.686.5872

## SENIOR CENTERS

**Dayton Senior Center**

320 Old Dayton Valley Rd.

Dayton, NV 89403

Phone: (775) 246-6210

Fax: (775) 246-6321

**Hours of Operation:**

Monday-Friday, 8:00am-4:30pm

**Lyon County Senior Citizen Center**

1170 W. Newlands Dr.

Fernley, NV 89408

Phone: (775) 575-3370

**Hours of Operation:**

Monday 10am-6pm, Tuesday-Friday  
8am-4pm

**Yerington Senior Center**

117 Tilson Rd.

Yerington, NV 89447

Phone: (775) 463-6550

**Hours of Operation:**

Monday-Friday 8:00am-  
4:30pm

**Silver Springs Senior Center**

2945 Ft. Churchill Rd.

Post Office Box 149

Silver Springs, NV 89429

Phone: (775) 577-5014

Fax: (775) 577-5209

**Hours of Operation:**

Monday and Friday 8:00am-4:30pm  
Tuesday-Thursday 9:30am-6:00pm



# PET & ANIMAL SERVICES



## VETERINARIANS

### **Animal Care Center**

805 E Main St D.  
Fernley, NV  
775.575.5851

### **Moffitt Animal Clinic**

305 US-95 ALT.  
Fernley, NV  
775.835.8387

### **Dayton Valley Veterinary Hospital**

14 Enterprise Way.  
Dayton, NV  
775.246.7775

### **Greenfield Animal Hospital**

405 S Main St.  
Yerington, NV  
775.463.0055

### **Dayton Riverside Veterinary Hospital**

210 Dayton Valley Rd.  
Dayton, NV  
775.246.5392

## SHELTERS & RESCUE ORGANIZATIONS

### **Lyon County Animal Services**

3705 US-50.  
Silver Springs, NV  
775.577.5005

### **Safe Haven/Build A Rescue Kennel Inc.**

N 28 Hwy-95A.  
Yerington, NV  
775.463.1842

### **Yerington Animal Control**

215 Trowbridge Rd.  
Yerington, NV  
775.463.6578

## KENNELS, BOARDING & DAYCARE

### **Pets Bed & Breakfast**

81 Mason Rd.  
Fernley, NV  
775.867.3840

### **Scooby Dooz Dog Grooming**

801 Overland Loop #305.  
Dayton, NV  
775.241.9511

### **The Poodle Palace**

810 Old Hwy 40  
Fernley, NV  
775.575.4929

### **Furr-Nley's Pet Spa**

140 E Main St #E.  
Fernley, NV  
775.302.3877

### **Classy Pet**

115 E Main St.  
Fernley, NV  
775.575.1131



# LOCAL CHURCHES & FAITH CENTERS

**Dayton Valley Community Church**

407 V&T Way  
Dayton, NV 89403  
775.241.7167

**St. Robert Bellarmine Catholic Church**

625 Desert Shadows Ln.  
Fernley, NV 89408  
775.575.4011

**The Church of Jesus Christ of Latter-day Saints**

5470 Elm St.  
Silver Springs, NV 89429

**Fernley Free Methodist**

100 N W St.  
Fernley, NV 89409  
775.575.4424

**Grace Baptist Church**

460 W Main St. #108  
Fernley, NV 89408  
775.575.7000

**First Baptist Church**

4 Austin St.  
Yerington, NV 89447  
775.463.3131

**Faith Lutheran Church**

12 N West St.  
Yerington, NV 89447  
775.463.5675

**Living Faith Christian Fellowship**

110 S Center St.  
Fernley, NV 89408  
775.575.5037

**Calvary Chapel Dayton Valley**

28 Enterprise Way  
Dayton, NV 89403  
775.241.9213

**CenterPoint Christian Fellowship**

100 Breakwater Dr.  
Dayton, NV 89403  
775.246.4108





# HEALTH CLUBS



## **Liberty Fitness-Fernley**

888 US-HWY 95A  
Fernley, NV 89408  
775.980.8096

## **Gracie Jiu-Jitsu**

888 Cottonwood Ln.  
Fernley, NV 89408  
775.980.8096

## **Kaia FIT- Fernley**

870 Cottonwood Ln.  
Fernley, NV 89408  
775.980.8150

## **Anytime Fitness-Yerington**

243 N Main St.  
Yerington, NV 89447  
775.463.3848

## **River Vista Fitness-Dayton**

230 Dayton Valley Rd.  
Dayton, NV 89403  
775.246.3650





# TRANSPORTATION

**Reno Tahoe International Airport is the only major airport in Reno/Sparks which has many destination points around the world. From Lyon County areas it is 30 minutes to an hour drive into Reno.**

**Reno/Tahoe International Airport**

2001 E. Plumb Lane  
775.328.6400  
[www.renoairport.com](http://www.renoairport.com)  
(28 miles west of Fernley)

**Carson City Airport**

2600 E College Parkway  
775.841.2255  
[www.flycarsoncity.com](http://www.flycarsoncity.com)

**South Lake Tahoe Airport**

1901 Airport Road  
530.541.0484  
[www.laketahoeairport.com](http://www.laketahoeairport.com)

**Taxi Service**

Reno Sparks Cab Co. - 775.333.3333  
Whittlesea Taxi - 775.322.2222  
Yellow Cab Company - 775.355.5555

**Tiger Field**

US Hwy 95A  
3 miles south of Fernley  
4,286 foot long paved runway  
775.575.7050

**Silver Springs Airport**

1991 Hwy 50  
13 miles south of Fernley  
6,600 foot long paved runway  
775.577.2111  
[www.silverspringsairport.com](http://www.silverspringsairport.com)

**Fallon Municipal Airport**

Hwy 50A  
27 miles east of Fernley  
24 hours, 5,700 ft runway, full serve  
775.423.5107





THINGS TO DO



# DAYTON

## THINGS TO DO



### **Dayton Valley Days**

Dayton Valley Days are a community get together for two days out of the year that are jam packed with events complete with a Chili Cook-Off and numerous parades. The World Famous Dayton Valley Days Pet Parade has grown to be quite popular where owners and their pets get to prance around Dayton.

### **Ooodles of Noodles and Pasta Cook-Off**

This annual event is held in Dayton and hosted by the Dayton Chamber of Commerce. This event celebrates Dayton's Chinese and Italian cuisine with a massive pasta cook-off, live entertainment, vendor booths, gun slingers, food, and much more!

### **V&T Railway**

Experience a historical train ride with wonderful scenery of the Comstock and also enjoy other themed train rides! The themed train rides include "A day out with Thomas the Train" and "Pumpkin Patch Trains" in October. Don't miss the "Candy Cane Express Train" in November and December. They have 7 departures daily from their station and no reservation is required.

### **Dayton Museum**

The Dayton Museum is located in Dayton's 1865 schoolhouse and is operated by the Historical Society of Dayton Valley. Admission is free and the museum is opened for the year starting in March and is open until November.

### **Dayton State Park**

Dayton State Park consists of 160 acres with typical Great Basin desert typography. Cotton wood, desert sage, rabbit brush and willows are present and the lower park borders the Carson River. The park features the remains of the Rock Point Mill built in 1861, a remnant of Dayton's mining glory days. Originally a Paiute fishing camp, the park provides a scenic site to camp, picnic, hike or hold group outings.





# FERNLEY

## THINGS TO DO

### Senior Pro Rodeo

Senior Pro Rodeo is held at Fernley Out of Town Park and is a two day event in the summer. This rodeo includes 2 timed events and 3 full rodeos. Watch all sorts of rodeo events from bull riding to barrel racing during those warm August nights.

### Fernley 95a Raceway

Fernley 95a Raceway is Nevada's premiere motorsports complex. This track is located just a short drive from Reno and has hosted some of Northern Nevada's most prestigious national and local racing events. From the National Sprint Car Series to Off-Road Competitions, Fernley 95a Raceway offers it all!

### Welcome to Fernley 4th of July

Come out to Fernley and celebrate the 4th of July the way it's meant to be celebrated! The day begins with a pancake breakfast at 8:00am which then leads to a parade down Main Street at 10:00am. The parade is kicked off by the "Show n Shine" cars and is then lead down Main Street by Nevada Veterans Coalition with the presentation of the National Colors. Once the parade ends, we head on over to the park for some fun and entertainment. It will be complete will vendors as well as food and then once dusk rolls around we lay out on the baseball fields and watch the fireworks!

### Burning Man

Burning Man is an annual art festival located in the Black Rock Desert of Nevada. Tens of thousands of people gather in Nevada's desert to create Black Rock City which is a temporary art and self expression community. This event happens over labor day weekend and the total travel time from Fernley to Black Rock Desert is 1 hour 30 minutes.

### Fernley Golf Classic

This annual golf tournament is put on by the Fernley Chamber of Commerce during the end of summer. It is held at The Golf Club of Fernley.

### Fernley Hometown Christmas

Fernley Hometown Christmas is complete with a parade and tree lighting celebrations. Upon the conclusion of the parade, the tree lighting will begin which includes caroling, music and holiday festivities.





# YERINGTON

## THINGS TO DO

### **Lyon County Fair & Rodeo**

Every August the Lyon County Fair and Rodeo is held at the Lyon County Fair Grounds. This family event includes a fair, rodeo, carnival, demolition derby, kids night, tractor pulls, parade and numerous other family friendly events.

### **Night in the Country**

Night in the Country is a three day Country & Western music concert held away from the big city lights for over 15 years, out in the quiet farming town of Yerington. They provide top name music stars and offer a great music line up and camping at the site.

### **Yerington Theater for the Arts**

Yerington Theater for the Arts is a non-profit organization operating in Yerington, Nevada whose mission is to enrich the quality of life in the community through the arts. They operate the Jeanne Dini Center and present performing arts, visual art exhibitions, art education programs, and cultural heritage events.

### **Lyon County Museum**

The main building of the Lyon County Museum holds artifacts that reveal the culture and history of its people. Some of the exhibits include housewares, clothing, a courthouse and pictures of the Anaconda Mining Company. A visit to this museum presents a great opportunity to learn more about American culture.

### **Anaconda Copper Mine**

The Anaconda Copper Mine was once the lifeblood of Yerington. The mine operated from 1951 to 1978 and during that time, the pit produced copper ore at a rate of 13,000 tons a day, six days a week. Today all that is left of the mine is a spectacular view of the open pit, with the blue lake at the center. It is worth the detour on the outskirts of Yerington to enjoy the grand view of the lake and the mountains beyond Mason Valley.

### **Lyon County Courthouse**

Construction of The Lyon County Courthouse took place from 1911-1912 after the previous courthouse in Dayton burned down. The building was made of brick and featured a mix of Beaux-Arts and Neoclassical design. Today the courthouse is listed on the National Register of Historic Places.

### **Dini's Lucky Club**

Dini's Lucky Club is the oldest family-owned casino in Nevada. This club has been operating since 1933 and a visit to Yerington is not complete without a stop at this place. Aside from the gaming, Dini's coffee shop serves breakfast, lunch and dinner. When looking for a place to have a good meal, you are sure to find it at Dini's.





# SMITH VALLEY THINGS TO DO



## **Walker River Resort**

The great scenic beauty of unspoiled western Nevada awaits at this wonderful ranch style resort. The West Walker River offers a great environment for float trips, recreational off-roading trails, and great fly fishing. For more information visit [www.wrresort.com](http://www.wrresort.com).

## **C G Bar**

Make sure to stop by this locally owned, best little bar in Smith Valley and enjoy some drinks, fun and great food!

## **Wilson Canyon Nature Hiking Trail**

This well marked trail leads you through a portion of Wilson Canyon but also the washes and side canyons that drain into the main canyon. With spectacular desert scenery and extraordinary geological features, you make one of the best hiking trails in the area.

## **Smith Valley Rotary Fun Days**

Come enjoy a weekend full of fun at the annual Smith Valley Rotary Fun Days. This event is complete with food, fun and vendors. For more information please visit [www.portal.clubrunner.ca/8460](http://www.portal.clubrunner.ca/8460)

## **Running R Arena**

The Running R Arena located in Smith Valley, NV is home to sanctioned and non-sanctioned Team Roping Jackpots, Barrel Racing and is a practice site for the Nevada State Championship- High School Rodeo Competition. For more information on ongoing Running R Arena events please visit [www.russellfunk.com](http://www.russellfunk.com)

# SILVER SPRINGS THINGS TO DO



## **Lahontan State Park**

Lahontan Lake located in Silver Springs, became a state park on July 1, 1971. You can access the park from US Hwy 50 East or from US Hwy 95 South. Choose from over 10 beaches to camp on located around the lake. Here you can enjoy fishing, camping, and other boating activities.

## **Fort Churchill State Park**

Fort Churchill was an integral part of Nevada's history and the American West. Fort Churchill was built in 1861 to provide protection for early settlers and to guard Pony Express mail runs. Visitors can walk through designated trails to study the ruins and the park also features the renovated Buckland Station.



# GOLF COURSES



## **Fernley**

The Golf Club at Fernley  
50 Desert Lakes Drive  
775.853.6933  
18 holes/ Par 72

## **Dayton**

Dayton Valley Golf Club  
101 Palmer Drive  
775.246.7888  
18 holes/Par 72







# WINTER RECREATION

The Reno / Lake Tahoe region has a wide variety of top cross-country skiing areas, downhill ski resorts, and snow play areas. Sprinkled around the Lake Tahoe area, these winter sports areas are blessed with abundant snow, excellent accommodations, and easy access from Reno, Sacramento, and the Bay Area. In addition to downhill and cross-country skiing, winter sports opportunities include snowshoeing, sledding, snow tubing, and snowmobiling.

## SLEDDING, SNOWSHOEING, ETC!

**Tahoe Donner Snow Play Area** - (530) 587-9437 - 11509 Northwood in Truckee

**Palisades Tahoe** - (800) 430-0206 - south of Truckee on Highway 89

**Soda Springs Snow Park** - (530) 426-3901 - I80 at Soda Springs exit

**Sugar Bowl Sledding & Snow Play** - (530) 426-9000 - I80 at Soda Springs exit

**Northstar at Tahoe** - (530) 562-2013 - south of Truckee on Highway 267

**Heavenly Adventure Peak Snow Park** - (775) 586-7000 - South Lake Tahoe

**Boreal's Tubing Park** - (530) 426-3666 - I80 at Donner Summit

**Hansen's Resort** - (530) 544-3361 - South Lake Tahoe

**Granlibakken's Sledhill** - (800) 543-3221 - Tahoe City, west shore Lake Tahoe

**Kingvale Sledding and Tubing Park** - (916) 622-6654 - I80 at Kingvale exit

**Woodward Tahoe** - (530) 426-1114 - 19749 Boreal Ridge - Soda Springs

**Hope Valley Outdoors** - (530) 721-2015 - Pickett's Junction, SR-88 and SR-89

## Cross Country Skiing

### Caples Lake Resort

1111 Highway 88, Kirkwood, CA  
209.258.8888

[www.capleslakeresort.com](http://www.capleslakeresort.com)

### Sorensen's Resort

14255 Highway 88, Hope Valley, CA  
530.694.2203 / 800.423.9949

[www.sorensensresort.com](http://www.sorensensresort.com)

### Royal Gorge Cross Country

9411 Pahatsi Rd. Soda Springs, CA  
530.426.3871

[www.royalgorge.com](http://www.royalgorge.com)

## Snowmobiling

### Lake Tahoe Adventures

South Lake Tahoe, CA  
530.577.2940 / 800.865.4679

[www.laketahoeadventures.com](http://www.laketahoeadventures.com)

### Zephyr Cove Snowmobiling Center

760 Hwy 50, Zephyr Cove, NV  
775.588.4906 / 800.238.2463





# TAHOE AREA RESORTS

|   | Elevation | Terrain<br>(Acres) | Vertical<br>Drop | Chairlifts | Lessons | Beginner<br>Runs % | Intermediate<br>Runs % | Advanced<br>Runs % |
|---|-----------|--------------------|------------------|------------|---------|--------------------|------------------------|--------------------|
| <b>Alpine Meadows</b><br>(530) 583-4232   | 8,637'    | 2,400              | 1,802'           | 13         | YES     | 24                 | 40                     | 35                 |
| <b>Boreal</b><br>(530) 426-3666           | 7,700'    | 380                | 500'             | 8          | YES     | 30                 | 55                     | 15                 |
| <b>Diamond Peak</b><br>(775) 832-1177     | 8,540'    | 655                | 1,840'           | 7          | YES     | 18                 | 46                     | 36                 |
| <b>Donner Ski Ranch</b><br>(530) 426-3635 | 7,781'    | 460                | 750'             | 6          | YES     | 25                 | 50                     | 25                 |
| <b>Granlibakken</b><br>(800) 543-3221     | 6,300'    | 7                  | 300'             | 2          | YES     | 60                 | 40                     | 0                  |
| <b>Heavenly</b><br>(775) 586-7000         | 10,067'   | 4,800              | 3,500'           | 28         | YES     | 20                 | 45                     | 35                 |
| <b>Homewood</b><br>(530) 525-2992         | 7,880'    | 1,260              | 1,650'           | 8          | YES     | 15                 | 50                     | 35                 |
| <b>Kirkwood</b><br>(209) 258-6000         | 9,800'    | 2,300              | 2,000'           | 15         | YES     | 12                 | 30                     | 58                 |
| <b>Mt. Rose</b><br>(775) 849-0704         | 9,700'    | 1,200+             | 1,800'           | 8          | YES     | 20                 | 30                     | 50                 |
| <b>Northstar</b><br>(530) 562-2267        | 8,610'    | 3,170              | 2,280'           | 20         | YES     | 25                 | 60                     | 27                 |
| <b>Sierra-at-Tahoe</b><br>(530) 659-7453  | 8,852'    | 2,000              | 2,212'           | 14         | YES     | 25                 | 50                     | 25                 |
| <b>Soda Springs</b><br>(530) 426-3901     | 7,300'    | 200                | 550'             | 5          | YES     | 30                 | 40                     | 30                 |
| <b>Palisades Tahoe</b><br>(800) 403-0206  | 9,050'    | 3,600              | 2,850'           | 29         | YES     | 25                 | 45                     | 30                 |
| <b>Sugar Bowl</b><br>(530) 426-9000       | 8,383'    | 1,650              | 1,500'           | 13         | YES     | 17                 | 45                     | 38                 |
| <b>Tahoe Donner</b><br>(530) 587-9444     | 7,350'    | 120                | 600'             | 4          | YES     | 40                 | 60                     | 0                  |



# NEVADA STATE PARKS

Camping, fishing, hiking, swimming, nature study, star-gazing—not your thing? How about mountain biking, horseback riding, boating, water skiing, snowshoeing, ice-skating? Choose your favorite outdoor activity and Nevada State Parks will provide a place for it. Nevada's 23 state parks, recreation areas and historic sites are stretched across terrains as diverse as alpine forests and bone-dry deserts. Among them are natural lakes and man-made reservoirs, such as world-famous, 22 mile long Lake Tahoe or the much smaller Echo Canyon and its 35-acre reservoir.

Other parks provide glimpses into the past. Valley of Fire is one of the state's oldest, with 3,000-year-old petroglyphs carved in sandstone and breathtaking views of the maroon-colored rock formations created during the age of the dinosaurs. Mormon Station in Genoa and the Old Las Vegas Mormon Fort feature replicas of 19th-century fortifications and visitor centers explaining regional history.

Many campgrounds and RV facilities are open all year, depending on the weather. You can even stay in a yurt at Cave Lake State Park near Ely. Trailheads are well marked, and facilities at many parks include RV dump stations, showers and day use facilities for groups. For more information on Off-highway Vehicles (OHV) registration, go to Department of Motor Vehicles at [dmv.nv.com](http://dmv.nv.com).

|   |  |
|---|--|
| <b>Beaver Dam State Park</b>                          | <b>Sand Harbor</b>                                   |
| <b>Berlin-Ichthyosaur State Park</b>                  | <b>Spooner Backcountry</b>                           |
| <b>Big Bend of the Colorado State Recreation Area</b> | <b>Cave Rock</b>                                     |
| <b>Cathedral Gorge State Park</b>                     | <b>Mormon Station State Historic Park</b>            |
| <b>Cave Lake State Park</b>                           | <b>Old Las Vegas Mormon Fort State Historic Park</b> |
| <b>Dayton State Park</b>                              | <b>Rye Patch State Recreation Area</b>               |
| <b>Echo Canyon State Park</b>                         | <b>South Fork State Recreation Area</b>              |
| <b>Elgin Schoolhouse State Historic Site</b>          | <b>Spring Mountain Ranch State Park</b>              |
| <b>Fort Churchill State Historic Site</b>             | <b>Spring Valley State Park</b>                      |
| <b>Fort Churchill State Historic Park</b>             | <b>Valley of Fire State Park</b>                     |
| <b>Kershaw-Ryan State Park</b>                        | <b>Ward Charcoal Ovens State Historic Park</b>       |
| <b>Lahontan State Recreation Area</b>                 | <b>Washoe Lake State Park</b>                        |
| <b>Lake Tahoe Nevada State Park</b>                   | <b>Wild Horse State Recreation Park</b>              |





# FIRST CENTENNIAL TITLE CO. OF NEVADA

[www.FirstCentennial.com](http://www.FirstCentennial.com)

On February 15, 1978, First Centennial Title Company opened its doors with a manager, one escrow officer, a title searcher, a bookkeeper, and a receptionist. First Centennial Title was affiliated with Centennial Title Resource out of San Diego, California. At the time of opening we were told by our competitors that we would never survive the Nevada business climate, as the industry was at its lowest point in years and we were competing with nine other title companies in the area. First Centennial has enjoyed many years of success since then.

In 1983, First Centennial Title of Nevada separated from the San Diego office and took over the building and business of Valley Title along with keeping their own name, clients and employees.

On March 1, 2001, First Centennial joined the Orange Coast Title Family of Businesses. Orange Coast Title brought its corporate support including technology and E-commerce initiatives to First Centennial. Orange Coast is one of the most successful privately held companies serving the Commercial and Residential real estate markets.

First Centennial Title, a full service title and escrow company, has grown from a one-office operation to a multi-office operation, with Branches in Reno, Sparks, Carson City, Incline Village and Stateline. Through the dedication of employees and direction of management, First Centennial Title has not only survived but has also flourished.

## MISSION STATEMENT

...

FIRST CENTENNIAL TITLE IS YOUR PREEMINENT PROVIDER OF TITLE AND ESCROW SERVICES IN NORTHERN NEVADA. OUR EXPERIENCED TEAM IS COMMITTED TO BRINGING COMPREHENSIVE SOLUTIONS THROUGH OUR "IN IT TO CLOSE IT" CULTURE. WITH UNSURPASSED RESOURCES WE CREATE PEACE OF MIND MAKING YOUR REAL ESTATE EXPECTATIONS A REALITY.

### RENO MAIN

1450 Ridgeview Dr. Suite 100  
Reno, NV 89519  
Phone: 775.689.8510  
Fax: 775.689.8520

### PLAZA

3700 Lakeside Dr. #110  
Reno, NV 89509  
Phone: 775.689.1810  
Fax: 775.800.5701

### ZEPHYR COVE

212 Elks Point Rd. #107  
Zephyr Cove, NV 89448  
Phone: 775.841.6580  
Fax: 775.507.3995

### SPARKS

4870 Vista Blvd. #110  
Sparks, NV 89436  
Phone: 775.689.8551  
Fax: 775.507.3998

### CARSON CITY

896 W. Nye Ln. # 104  
Carson City, NV 89703  
Phone: 775.841.6580  
Fax: 775.507.3995

### GARDNERVILLE / MINDEN

1352 Hwy 395 Suite 114  
Gardnerville, NV 89410  
Phone: 775.737.5110  
Fax: 775.737.5109

### DAMONTE RANCH

500 Damonte Ranch Pkwy. Suite 820  
Reno, NV 89521  
Phone: 775.737.5090  
Fax: 775.571.1441